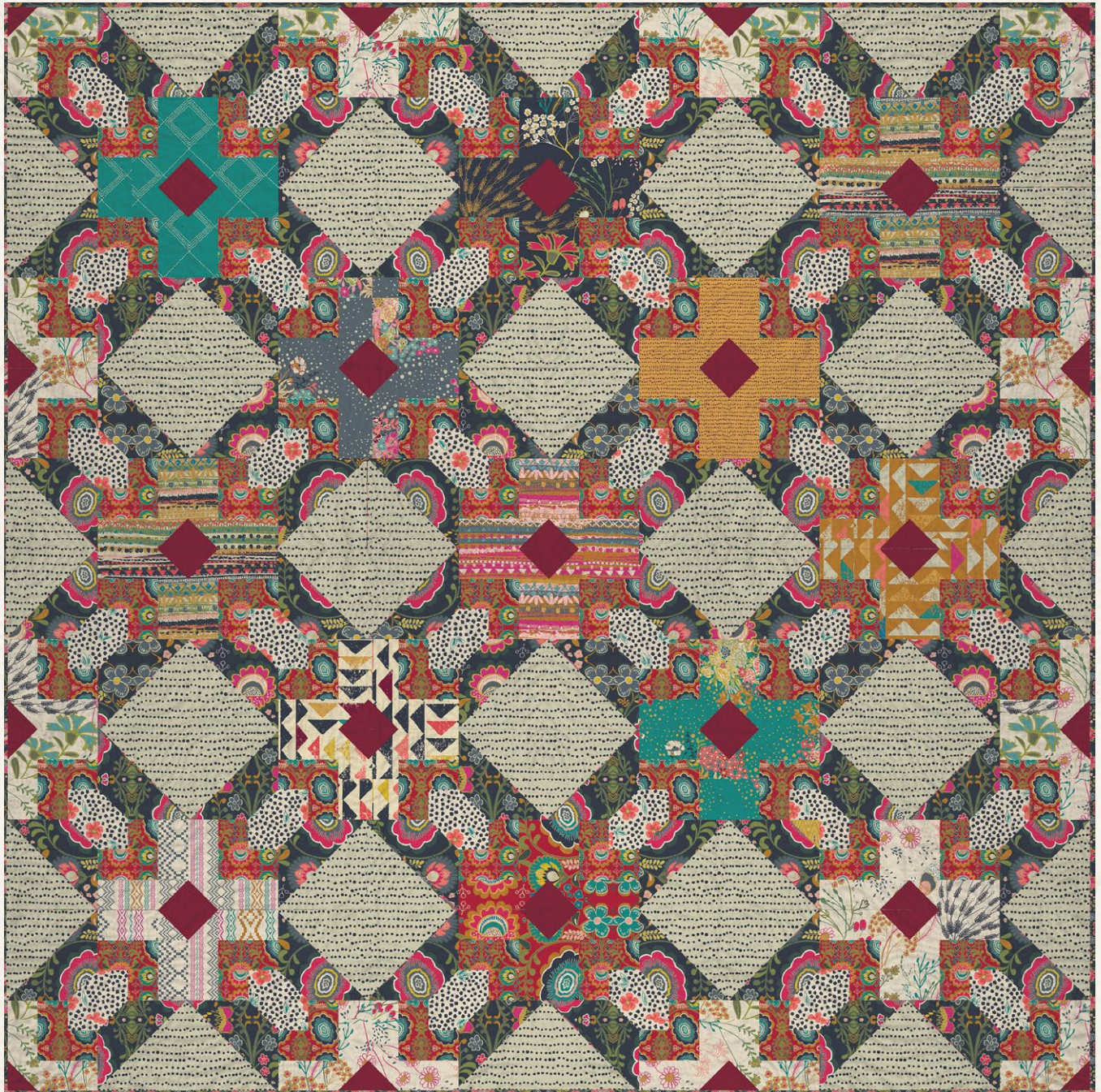
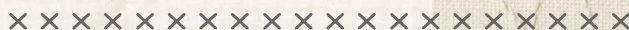




Folklore



FREE PATTERN



Folklore

Pat Bravo

QUILT DESIGNED BY PAT BRAVO



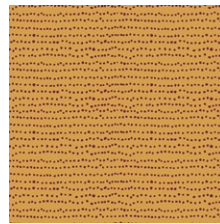
INDIEfolk

FABRICS DESIGNED BY PAT BRAVO

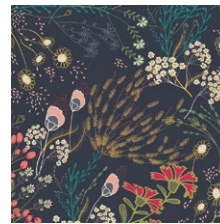
MEMORIES



IFL-46300
KHOKHLOMA BURGUNDIA



IFL-46301
FLECKS AUBURN



IFL-46302
MEADOW DIM



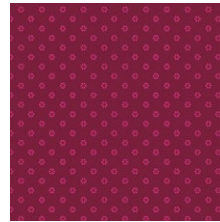
IFL-46304
TRINKET VIVID



IFL-46305
MIST FLORA LUMINOUS



IFL-46308
VERDANT BLOOM



IFL-46309
WHIRL ROUGE



IFL-46310
TROJKAT SUNRISE

FABLES



IFL-56300
KHOKHLOMA GLOOM



IFL-56301
FLECKS INDIGO



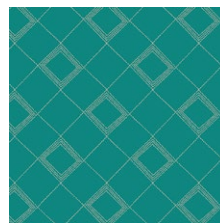
IFL-56302
MEADOW VIVID



IFL-56304
TRINKET BLUSH



IFL-56306
PATHWAYS RICH



IFL-56307
TARTAN TEAL



IFL-56308
POWDER BLOOM



IFL-56310
TROJKAT DESERT



ADDITIONAL BLENDERS FOR THIS PROJECT



PE-427
SPICEBERRY

Folklore

FINISHED SIZE | 72" x 72"

FABRIC REQUIREMENTS

Fabric A	IFL-46300	1½ yd.
Fabric B	IFL-46301	⅓ yd.
Fabric C	IFL-46302	⅛ yd.
Fabric D	IFL-46304	¼ yd.
Fabric E	IFL-46305	1⅓ yd.
Fabric F	IFL-46308	⅓ yd.
Fabric G	IFL-46310	⅓ yd.
Fabric H	IFL-56300	2¾ yd.
Fabric I	IFL-56301	1½ yd.
Fabric J	IFL-56302	1 yd.
Fabric K	IFL-56304	⅓ yd.
Fabric L	IFL-56306	⅓ yd.
Fabric M	IFL-56307	⅓ yd.
Fabric N	IFL-56308	⅓ yd.
Fabric O	IFL-56310	⅓ yd.
Fabric P	PE-427	½ yd.

BACKING FABRIC

IFL-56309 5 yd *(Suggested)*

BINDING FABRIC

Fabric **H** IFL-56300 *(Included)*

CUTTING DIRECTIONS

¼" seam allowances are included.

- Eighty (80) 4½" x 2½" rectangles from fabric **A**.
- Seventy four (74) 2½" squares from fabric **A**.
- Two (2) 2⅞" squares from fabric **A**.
- Eight (8) 4½" x 2½" rectangles from fabric **B**.
- Two (2) 2⅞" squares from fabric **B**.
- Eight (8) 2½" x 4½" rectangles from fabric **C**. To maximize the use of the fabric cut the width of the rectangle to 2½" and the height to 4½".
- Two (2) 2⅞" squares from fabric **C**.
- Sixteen (16) 2½" x 4½" rectangles from fabric **D**. To maximize the use of the fabric cut the width of the rectangle to 2½" and the height to 4½".
- Four (4) 2⅞" squares from fabric **D**.
- One hundred forty four (144) 2½" squares from fabric **E**.
- Eight (8) 4½" x 2½" rectangles from fabric **F**.
- Two (2) 2⅞" squares from fabric **F**.
- Eight (8) 4½" x 2½" rectangles from fabric **G**.
- Two (2) 2⅞" squares from fabric **G**.
- Thirty six (36) 6⅞" squares from fabric **H**.
- Thirty six (36) 6⅞" squares from fabric **I**.
- Forty eight (48) 4½" x 2½" rectangles from fabric **J**.
- Twelve (12) 2⅞" squares from fabric **J**.
- Eight (8) 4½" x 2½" rectangles from fabric **K**.
- Two (2) 2⅞" squares from fabric **K**.
- Eight (8) 4½" x 2½" rectangles from fabric **L**.
- Two (2) 2⅞" squares from fabric **L**.
- Eight (8) 4½" x 2½" rectangles from fabric **M**.
- Two (2) 2⅞" squares from fabric **M**.
- Eight (8) 4½" x 2½" rectangles from fabric **N**.
- Two (2) 2⅞" squares from fabric **N**.
- Eight (8) 4½" x 2½" rectangles from fabric **O**.
- Two (2) 2⅞" squares from fabric **O**.
- Thirty six (36) 2⅞" squares from fabric **P**.

CONSTRUCTION

Sew all rights sides together with $\frac{1}{4}$ " seam allowance.

Block 1 (x 72):

- Take seventy two (72) $2\frac{1}{2}$ " x $2\frac{1}{2}$ " squares from fabric **E**, and thirty six (36) $6\frac{7}{8}$ " x $6\frac{7}{8}$ " squares from fabrics **H** and **I**.
- Half Square Triangle (HST):**
- Align face to face every square from fabric **H** with a square from fabric **I**.
- Draw a diagonal line in the back of the top square.
- Stitch at $\frac{1}{4}$ " from either side of the diagonal line.
- Cut following the drawn line.
- Open and press.
- From every **HI** pair, you will get two (2) **HI** half square triangles (HST), so from the thirty six (36) **HI** pairs, you should have a total of seventy two (72) **HI** HST.

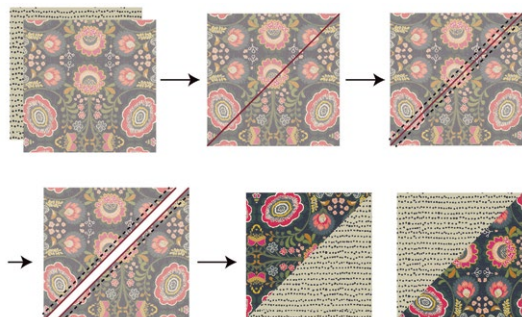
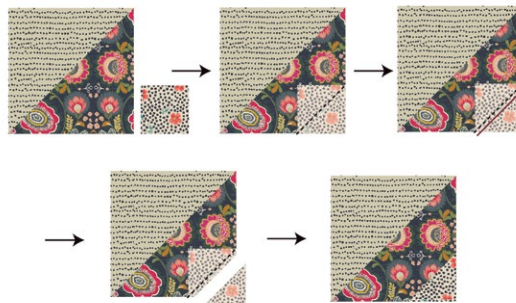


DIAGRAM 1

- Align face to face each $2\frac{1}{2}$ " square from fabric **E** to the fabric **H** corner of each **HI** HST.
- Stitch on the diagonal of fabric **F**.
- Trim at $\frac{1}{4}$ " from the sewn line.
- Open and press.
- You should have seventy two (72) block 1.



Block 1 (x 72)

DIAGRAM 2

Block 2 (x 72):

- Take seventy two (72) $4\frac{1}{2}$ " x $2\frac{1}{2}$ " rectangles from fabric **A**, and seventy two (72) $2\frac{1}{2}$ " squares from fabrics **A** and **E**.
- Join each square from fabric **E** to one (1) square from fabric **A**.
- Join each **AE** rectangle to one (1) $4\frac{1}{2}$ " x $2\frac{1}{2}$ " rectangle from fabric **A**.
- For fabric placement and alignment follow diagram 3.



Block 2 (x 72)

DIAGRAM 3

Mini Half Square Triangles (HST):

- Take two (2) $2\frac{7}{8}$ " squares from fabrics **A**, **B**, **F**, **C**, **G**, **K**, **L**, **M**, **N**, and **O**, four (4) $2\frac{7}{8}$ " squares from fabric **D**, twelve (12) $2\frac{7}{8}$ " squares from fabric **J**, and thirty six (36) $2\frac{7}{8}$ " squares from fabric **P**.
- You will pair the squares to get seventy two (72) HST following the instructions from Diagram 1.
- For fabric combinations follow Diagram 5.

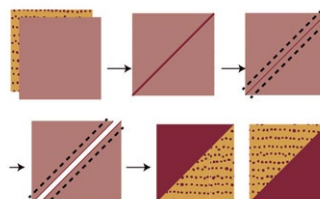


DIAGRAM 4

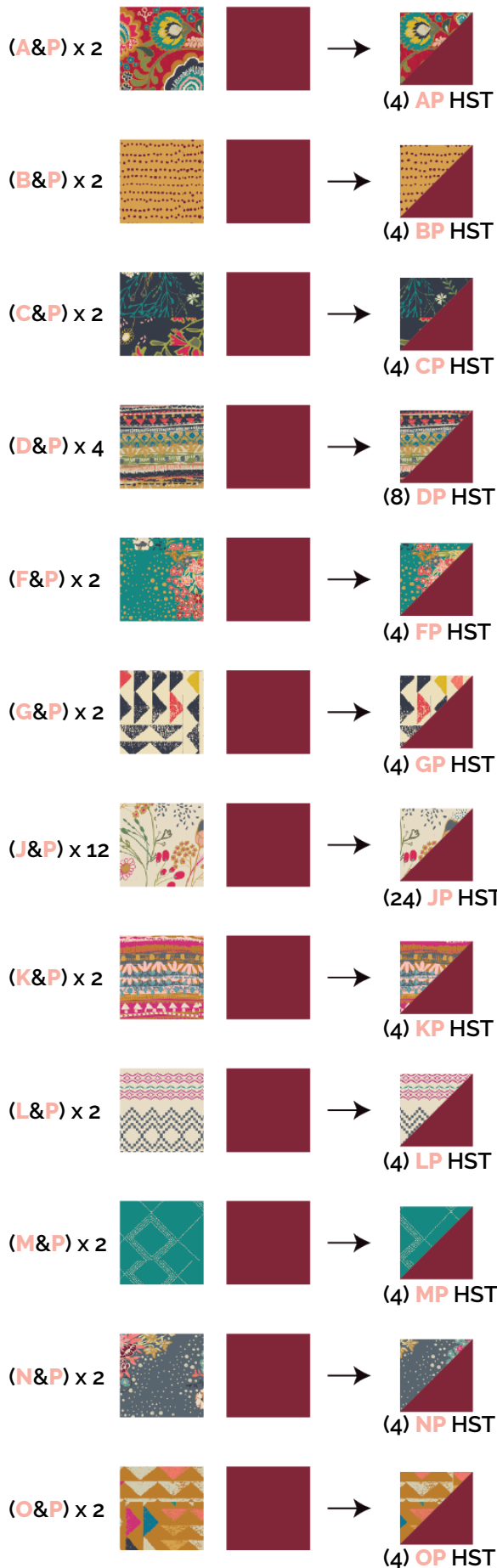


DIAGRAM 5

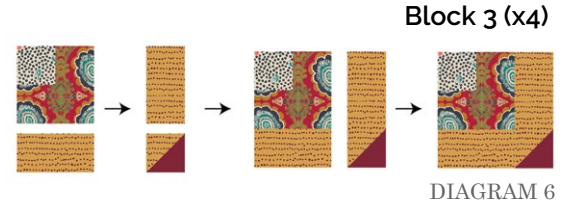
• **Block 3 (x4):**

- Take four (4) block 2 and **BP** HST and eight (8) $4\frac{1}{2} \times 2\frac{1}{2}$ " rectangles from fabric **B**.

- Join each block 2 to one (1) $4\frac{1}{2} \times 2\frac{1}{2}$ " rectangle from fabric **B**.

- Join each **BP** HST to one (1) $4\frac{1}{2} \times 2\frac{1}{2}$ " rectangle from fabric **B**.

- Join both blocks



• **Block 4 (x4):**

- Take four (4) block 2 and **CP** HST, and eight (8) $2\frac{1}{2} \times 4\frac{1}{2}$ " rectangles from fabric **C**.

- Join each block 2 to one (1) $2\frac{1}{2} \times 4\frac{1}{2}$ " rectangle from fabric **C**.

- Join each **CP** HST to one (1) $2\frac{1}{2} \times 4\frac{1}{2}$ " rectangle from fabric **C**.

- Join both blocks



• **Block 5 (x8):**

- Take four (8) block 2 and **DP** HST, and sixteen (16) $4\frac{1}{2} \times 2\frac{1}{2}$ " rectangles from fabric **D**.

- Join each block 2 to one (1) $2\frac{1}{2} \times 4\frac{1}{2}$ " rectangle from fabric **D**.

- Join each **DP** HST to one (1) $2\frac{1}{2} \times 4\frac{1}{2}$ " rectangle from fabric **D**.

- Join both blocks



- **Block 6 (x4):**
- Take four (4) block 2 and **FP** HST, and eight (8) $4\frac{1}{2} \times 2\frac{1}{2}$ " rectangles from fabric **F**.
- Join each block 2 to one (1) $4\frac{1}{2} \times 2\frac{1}{2}$ " rectangle from fabric **F**.
- Join each **FP** HST to one (1) $4\frac{1}{2} \times 2\frac{1}{2}$ " rectangle from fabric **F**.
- Join both blocks



- **Block 7 (x4):**
- Take four (4) block 2 and **GP** HST, and eight (8) $4\frac{1}{2} \times 2\frac{1}{2}$ " rectangles from fabric **G**.
- Join each block 2 to one (1) $4\frac{1}{2} \times 2\frac{1}{2}$ " rectangle from fabric **G**.
- Join each **GP** HST to one (1) $4\frac{1}{2} \times 2\frac{1}{2}$ " rectangle from fabric **G**.
- Join both blocks



- **Block 8 (x24):**
- Take twenty four (24) block 2 and **JP** HST, and forty eight (48) $4\frac{1}{2} \times 2\frac{1}{2}$ " rectangles from fabric **J**.
- Join each block 2 to one (1) $4\frac{1}{2} \times 2\frac{1}{2}$ " rectangle from fabric **J**.
- Join each **JP** HST to one (1) $4\frac{1}{2} \times 2\frac{1}{2}$ " rectangle from fabric **J**.
- Join both blocks



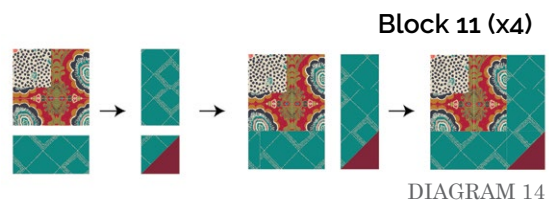
- **Block 9 (x4):**
- Take four (4) block 2 and **KP** HST, and eight (8) $4\frac{1}{2} \times 2\frac{1}{2}$ " rectangles from fabric **K**.
- Join each block 2 to one (1) $4\frac{1}{2} \times 2\frac{1}{2}$ " rectangle from fabric **K**.
- Join each **KP** HST to one (1) $4\frac{1}{2} \times 2\frac{1}{2}$ " rectangle from fabric **K**.
- Join both blocks



- **Block 10 (x4):**
- Take four (4) block 2 and **LP** HST, and eight (8) $4\frac{1}{2} \times 2\frac{1}{2}$ " rectangles from fabric **L**.
- Join each block 2 to one (1) $4\frac{1}{2} \times 2\frac{1}{2}$ " rectangle from fabric **L**.
- Join each **LP** HST to one (1) $4\frac{1}{2} \times 2\frac{1}{2}$ " rectangle from fabric **L**.
- Join both blocks



- **Block 11 (x4):**
- Take four (4) block 2 and **MP** HST, and eight (8) $4\frac{1}{2} \times 2\frac{1}{2}$ " rectangles from fabric **M**.
- Join each block 2 to one (1) $4\frac{1}{2} \times 2\frac{1}{2}$ " rectangle from fabric **M**.
- Join each **MP** HST to one (1) $4\frac{1}{2} \times 2\frac{1}{2}$ " rectangle from fabric **M**.
- Join both blocks



QUILT TOP

Sew all rights sides together with 1/4" seam allowance.

Join the blocks into the following rows:

Row 1:

• 8 - 1 - 1 - 8 - 8 - 1 - 1 - 8 - 8 - 1 - 1 - 8

Row 2:

• 1 - 11 - 11 - 1 - 1 - 1 - 4 - 4 - 1 - 1 - 5 - 5 - 1

Row 3:

• 1 - 11 - 11 - 1 - 1 - 1 - 4 - 4 - 1 - 1 - 5 - 5 - 1

Row 4:

• 8 - 1 - 1 - 12 - 12 - 1 - 1 - 1 - 3 - 3 - 1 - 1 - 8

Row 5:

• 8 - 1 - 1 - 12 - 12 - 1 - 1 - 1 - 3 - 3 - 1 - 1 - 8

Row 6:

• 1 - 5 - 5 - 1 - 1 - 1 - 9 - 9 - 1 - 1 - 13 - 13 - 1

Row 7:

• 1 - 5 - 5 - 1 - 1 - 1 - 9 - 9 - 1 - 1 - 13 - 13 - 1

Row 8:

• 8 - 1 - 1 - 7 - 7 - 1 - 1 - 1 - 6 - 6 - 1 - 1 - 8

Row 9:

• 8 - 1 - 1 - 7 - 7 - 1 - 1 - 1 - 6 - 6 - 1 - 1 - 8

Row 10:

• 1 - 10 - 10 - 1 - 1 - 1 - 14 - 14 - 1 - 1 - 1 - 8 - 8 - 1

Row 11:

• 1 - 10 - 10 - 1 - 1 - 1 - 14 - 14 - 1 - 1 - 1 - 8 - 8 - 1

Row 12:

• 8 - 1 - 1 - 8 - 8 - 1 - 1 - 1 - 8 - 8 - 1 - 1 - 8

• Join the rows following diagram 18.

- **Block 12 (x4):**
- Take four (4) block 2 and **NP** HST, and eight (8) $4\frac{1}{2} \times 2\frac{1}{2}$ " rectangles from fabric **N**.
- Join each block 2 to one (1) $4\frac{1}{2} \times 2\frac{1}{2}$ " rectangle from fabric **N**.
- Join each **NP** HST to one (1) $4\frac{1}{2} \times 2\frac{1}{2}$ " rectangle from fabric **N**.
- Join both blocks

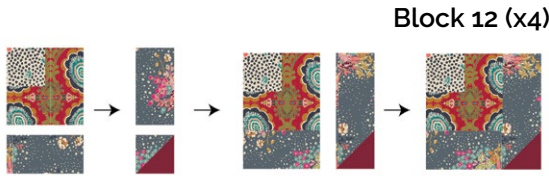


DIAGRAM 15

- **Block 13 (x4):**
- Take four (4) block 2 and **OP** HST, and eight (8) $4\frac{1}{2} \times 2\frac{1}{2}$ " rectangles from fabric **O**.
- Join each block 2 to one (1) $4\frac{1}{2} \times 2\frac{1}{2}$ " rectangle from fabric **O**.
- Join each **OP** HST to one (1) $4\frac{1}{2} \times 2\frac{1}{2}$ " rectangle from fabric **O**.
- Join both blocks



DIAGRAM 16

- **Block 14 (x4):**
- Take four (4) block 2 and **AP** HST, and eight (8) $2\frac{1}{2} \times 4\frac{1}{2}$ " rectangles from fabric **A**.
- Join each block 2 to one (1) $4\frac{1}{2} \times 2\frac{1}{2}$ " rectangle from fabric **C**.
- Join each **AP** HST to one (1) $4\frac{1}{2} \times 2\frac{1}{2}$ " rectangle from fabric **C**.
- Join both blocks

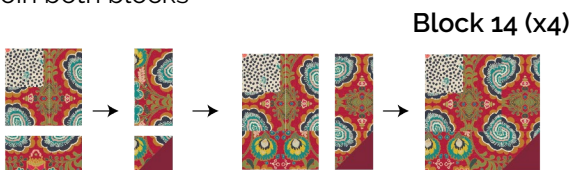


DIAGRAM 17

Row 1



Row 2



Row 3



Row 4



Row 5



Row 6



Row 7



Row 8



Row 9



Row 10



Row 11



Row 12



DIAGRAM 18

QUILT ASSEMBLY

Sew rights sides together.

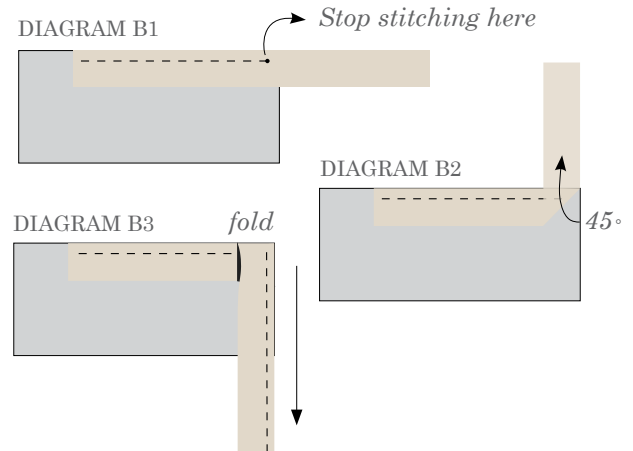
- Place BACKING FABRIC on a large surface wrong side up. Stretch it with masking tape against that surface.
- Place BATTING on top of backing fabric.
- Place TOP on top of the batting with right side facing up. Smooth away wrinkles using your hands.
- Pin all layers together and baste with basting thread, using long stitches. You can also use safety pins to join the layers.
- Machine or hand quilt starting at the center and working towards the corners. Remember that quilting motifs are a matter of personal preference. Have fun choosing yours!
- After you finished, trim excess of any fabric or batting, squaring the quilt to proceed to bind it.

BINDING

Sew rights sides together.

- Cut enough strips $1\frac{1}{2}$ " wide by the width of the fabric **H** to make a final strip 298" long. Start sewing the binding strip in the middle of one of the sides of the quilt, placing the strip right side down and leaving an approximated 5" tail. Sew with $\frac{1}{4}$ " seam allowance (using straight stitch), aligning the strip's raw edge with the quilt top's raw edge.
- Stop stitching $\frac{1}{4}$ " before the edge of the quilt (DIAGRAM B 1). Clip the threads. Remove the quilt from under the machine presser foot. Fold the strip in a motion of 45° and upward, pressing with your fingers (DIAGRAM B2). Hold this fold with your finger, bring the strip down in line with the next edge, making a horizontal fold that aligns with the top edge of the quilt (DIAGRAM B3). Start sewing at $\frac{1}{4}$ " of the border, stitching all the layers. Do the same in the four corners of the quilt.

- Stop stitching before you reach the last 5 or 6 inches. Cut the threads and remove the quilt from under the machine presser foot. Lay the loose ends of the binding flat along the quilt edge, folding the ends back on themselves where they meet. Press them together to form a crease. Using this crease as the stitching line, sew the two open ends of the binding with right sides together (you can help yourself marking with a pencil if the crease is difficult to see).
- Trim seam to $\frac{1}{4}$ " and press open. Complete the sewing. Turn binding to back of the quilt, turn raw edge inside and stitch by hand using blind stitch.



artgalleryfabrics.com

NOTE: While all possible care has been taken to ensure the accuracy of this pattern, We are not responsible for printing errors or the way in which individual work varies.

Please read instructions carefully before starting the construction of this quilt. If desired, wash and iron your fabrics before starting to cut.